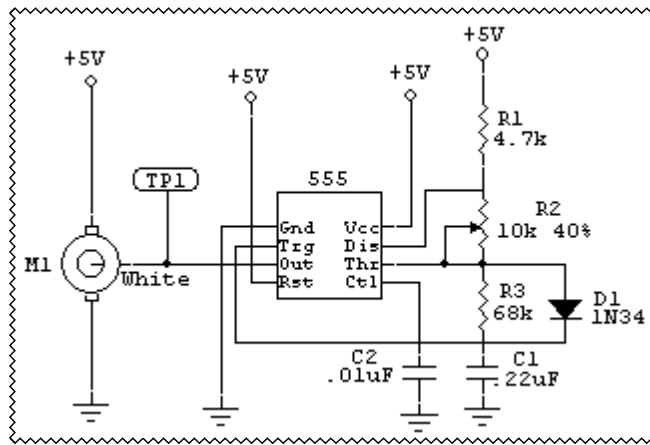
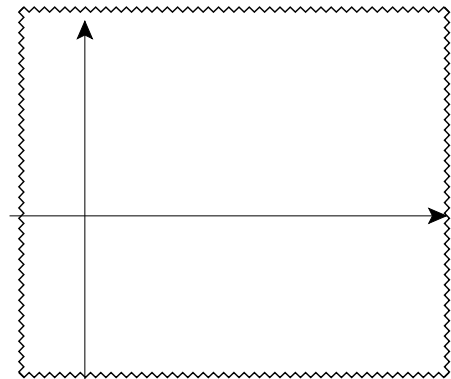


ET 350L  
Lab 11  
Servo Motor

Assemble the circuit shown below. Adjust the potentiometer so that the motor is at the “home” position.



1. Connect the oscilloscope at TP1. Draw the waveform observed and measure the frequency.



2. Measure the DC voltage at TP1 when the motor is at the home position; this is the set point.
3. Adjust the potentiometer so that the voltage at TP1 is above the set point. In which direction does the motor move?
4. What must be done in order to move the motor in the opposite direction?
5. What voltages are needed to move the motor to the right and left extremes?