

Lab 1 Field Effect Transistors (Part 2)

1. Assemble the circuit in Fig.1:
2. Use the value of V_{GSoff} from Part 1 and complete the following calculations:
3. Calculate the following values:

$$V_G$$

$$V_S$$

$$I_D$$

$$V_{RD}$$

$$V_D$$

$$V_{DS}$$

$$I_{SAT}$$

$$V_{DScutoff}$$

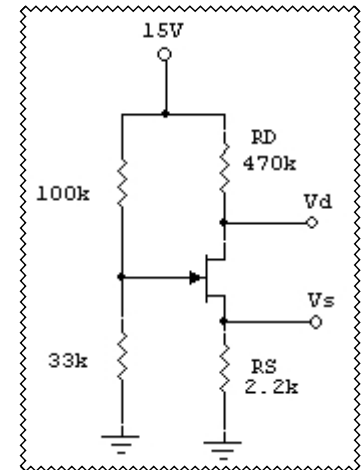


Fig. 1

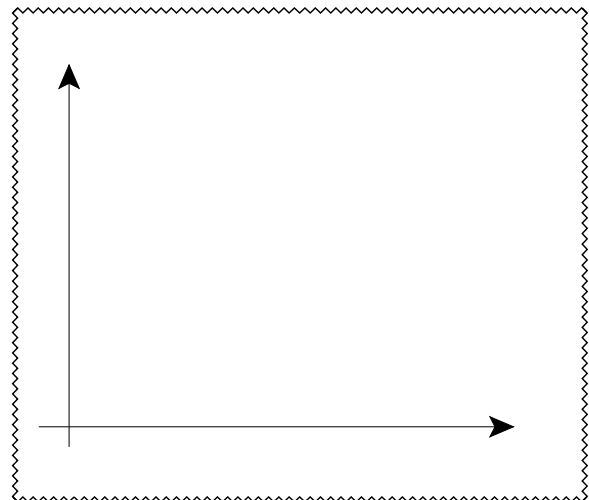


Fig.2

4. Complete the load line in Fig. 2:
5. Measure the following values and comment on how these values compare to the calculated values.

$$I_D$$

$$V_D$$

$$V_S$$

$$V_{DS}$$

$$V_{GS}$$