

1. In the circuit in Fig. 1, find  $V_B$ ,  $V_E$ ,  $V_{RE}$ ,  $I_C$ ,  $V_C$ ,  $V_{EC}$ ,  $V_{CB}$ . Is the transistor active?

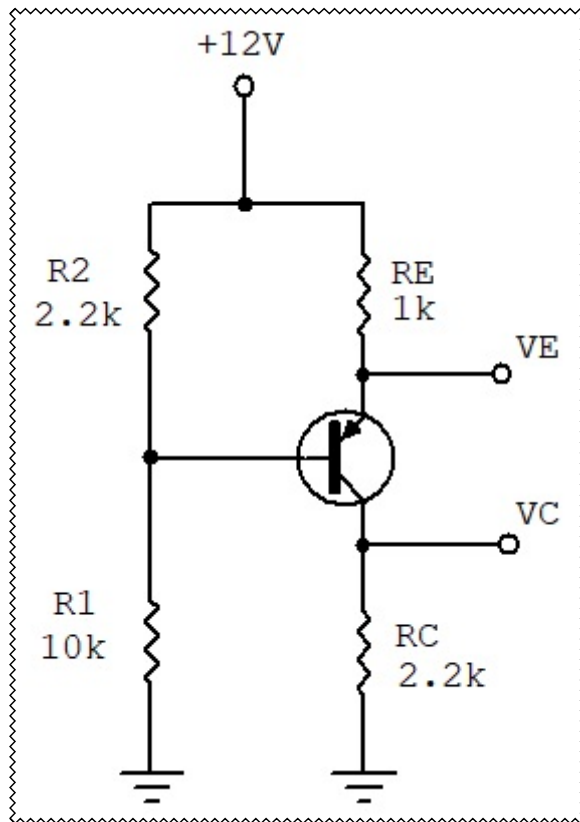


Fig. 1

4. What are the advantages of this amplifier?

5. Do the transistors conduct 360 degrees?

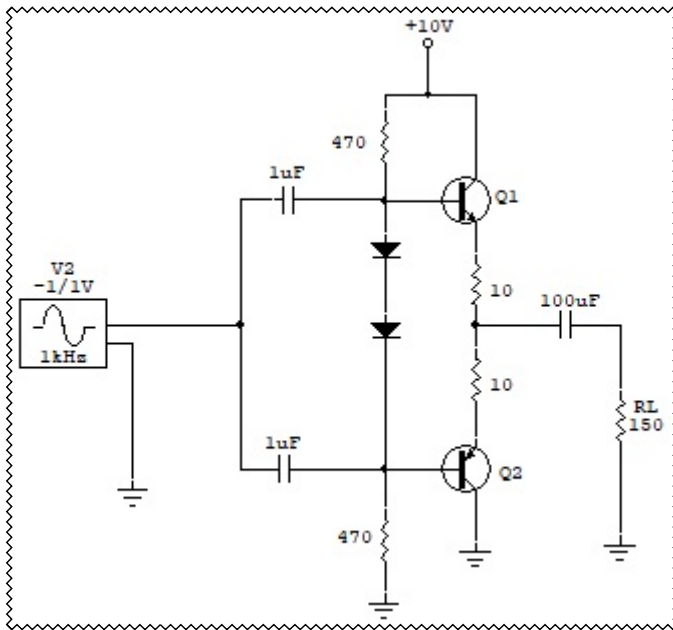


Fig. 2

2. What class of amplifier is shown in Fig. 2?

3. What type of component is Q2?