

Lab 13 Multistage Amplifiers

1. Assemble the following circuit in Fig. 1

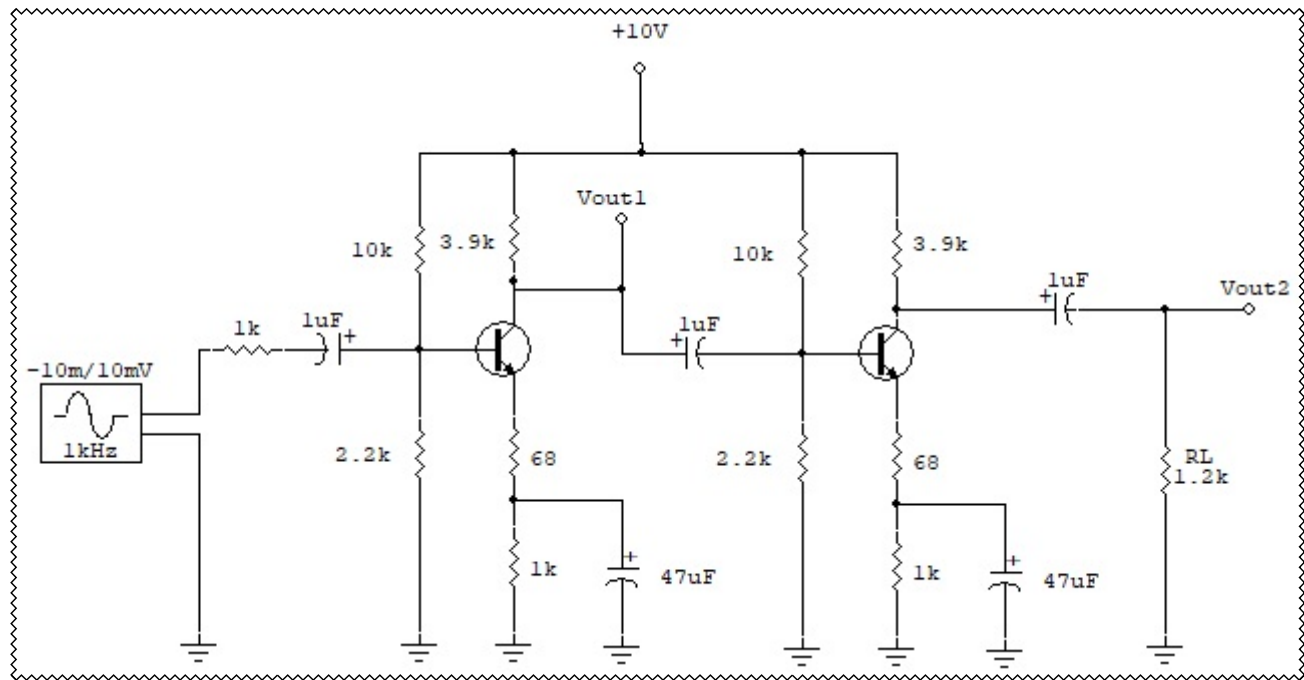


Fig. 1

2. Inject a signal of 20mVpp at 1kHz.

3. Measure the gain at Vout1 which is the gain of the first stage: $A_{V1} = \frac{V_{Out}}{V_{In}} =$

4. Measure the gain at Vout2; this is the overall gain: $A_{V2} = \frac{V_{Out}}{V_{In}} =$

5. Increase the amplitude of the signal generator until the output begins to distort; what is the maximum undistorted peak to peak signal?

Vout = _____