

Lab 6 Part 2 Op-Amp Parameters

Common Mode Rejection Ratio:

AC Operation:

1. Assemble the circuit in Fig. 1:

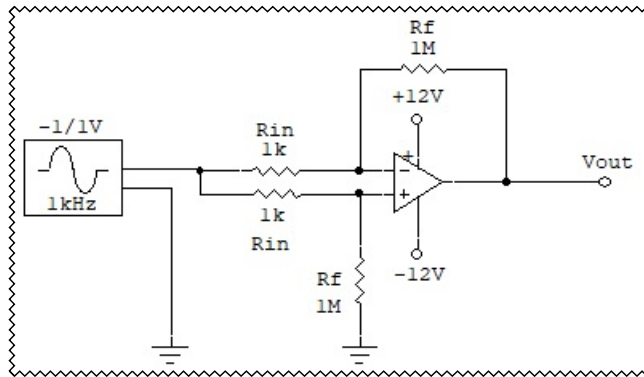


Fig. 1

2. Let $V_{in} = 2 \text{ Vpp}$ at 1kHz
3. Measure V_{out} : $V_{out} = \underline{\hspace{2cm}}$
4. Calculate Common Mode Rejection Ratio: $CMRR = \frac{R_F V_{IN}}{R_{IN} V_{OUT}} =$
5. Express CMMR in Decibels: $CMRR' = 20 \text{ Log} CMRR =$
6. Has the noise been reduced?

DC Operation

7. Assemble the circuit in Fig. 2

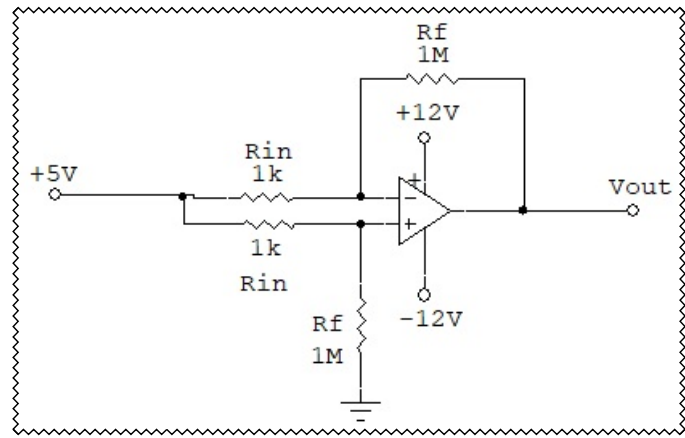


Fig. 2

8. Let $V_{in} = 5VDC$

9. Using a voltmeter, measure V_{out} : $V_{out} = \underline{\hspace{2cm}}$

10. Once again calculate CMRR and CMRR': $CMRR =$

$CMRR' =$

12. Has DC noise been reduced?